

# Biscuit Processing

## Screw Feeders TX

1



### Function ▼

TX Tubular Screw Feeders are usually installed under a silo or FIBC (Bulk Bag) discharger to feed powdery or granular materials into a weigh hopper. They are suitable for applications in which any contamination of the material handled has to be strictly avoided.



### Description ▼

TX Tubular Screw Feeders and Conveyors, which are manufactured from stainless steel with a suitable surface finishing grade appropriate for the application in Biscuit (cookies) Processing Plants, are highly versatile. Manufacture of the fabricated components is carried out on machines that guarantee a perfectly smooth surface due to which material residue is reduced to the minimum. The screw conveyors or feeders are made up from a tubular trough which is equipped with an inlet and an outlet spout, an end plate at each tube end, helicoid screw flighting continuously welded on both sides on a centre pipe with a coupling bush at each end, two end bearing assemblies complete with an air or gas-purged, adjustable shaft seal. Furthermore, the screw conveyors or feeders, which for this industry come without intermediate bearings, are equipped with a gear motor suitable for the application.

### Application ▼

The application in the photograph shows a TX Screw Feeder installed over a stainless steel hopper for transfer of the material (e.g. flour, starch, sugar, granulated sugar) into the process.

- ✓ Comfortable cleaning and maintenance;
- ✓ Minimum residue;
- ✓ High feeding accuracy;
- ✓ Vast range of options and accessories;
- ✓ Attractive price.



WAM®



WAMGROUP

[www.wamgroup.com](http://www.wamgroup.com)

# Biscuit Processing

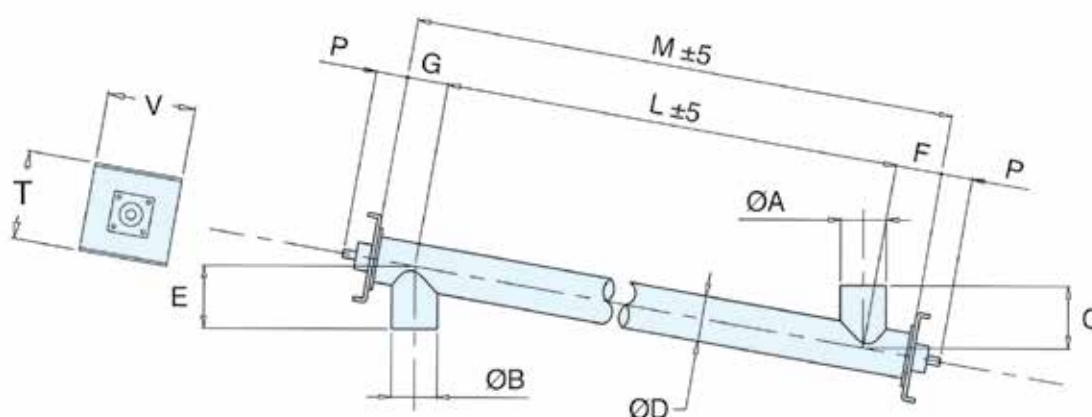
## Screw Feeders TX



### Technical Features / Performance ▼

- ▶ All fabricated parts manufactured from stainless steel
- ▶ Air or gas-purged shaft seals for maximum material protection against contamination
- ▶ Easily accessible inspection hatches
- ▶ Modular design
- ▶ ATEX zone 22 certification

### Overall Dimensions ▼



Type	100	120	150	200	250	300	350	400	500
Ø A	114	139	168	219	273	323	406	457	558
Ø B	114	139	168	219	273	323	406	457	558
C	1)								
Ø D	114	139	168	219	273	323	406	457	558
E	1)								
F	140	140	160	180	220	220	270	280	340
G	120	120	140	160	180	220	280	320	360
L	2)								
M	L + F + G								
P	114	114	124	124	124	124	151	151	162
T	280	280	280	355	410	465	535	590	740
V	265	265	265	315	365	435	485	540	655

Dimensions in mm

DS.2130.TX. EN, November 2013.100

Rights reserved to modify technical specifications.

*This datasheet might not show the complete range but only the models specialised for the application.*



[www.wamgroup.com](http://www.wamgroup.com)